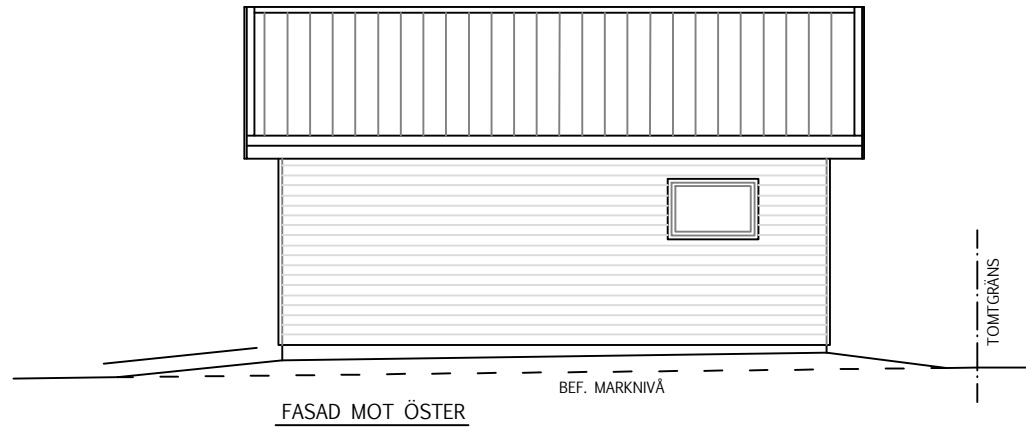
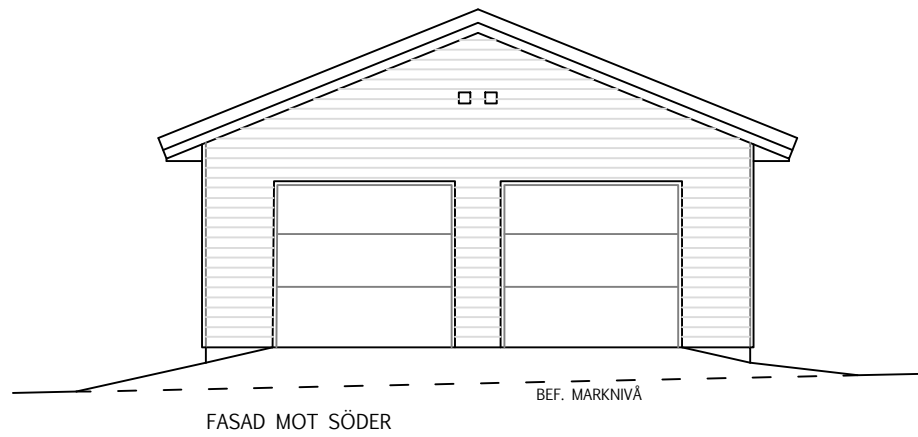


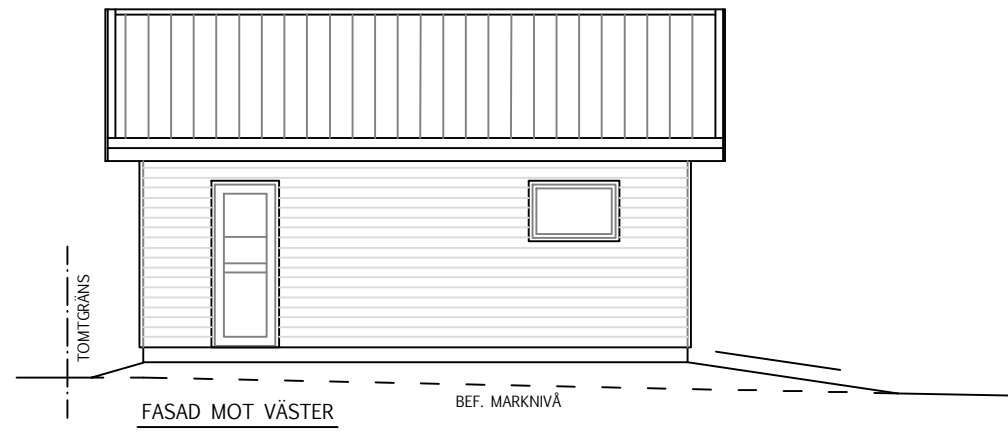
FASAD MOT NORR



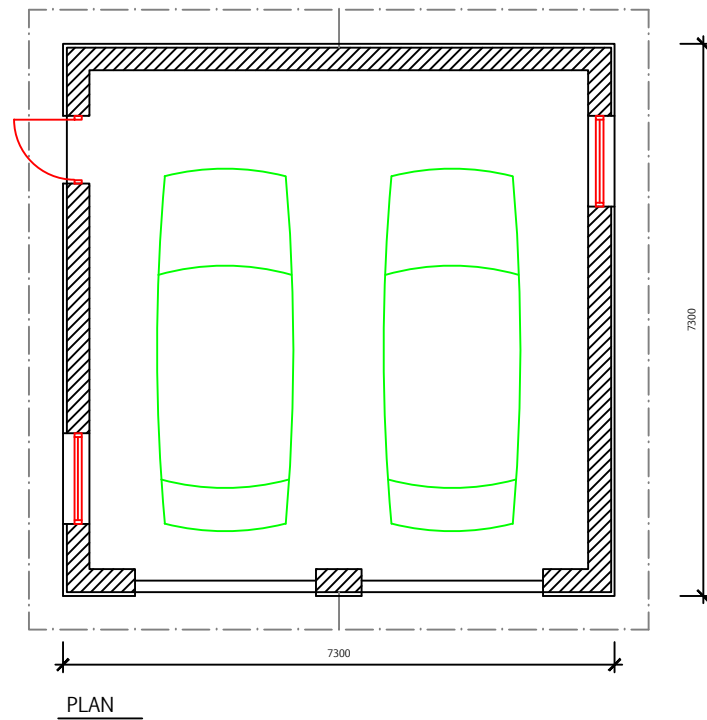
FASAD MOT ÖSTER



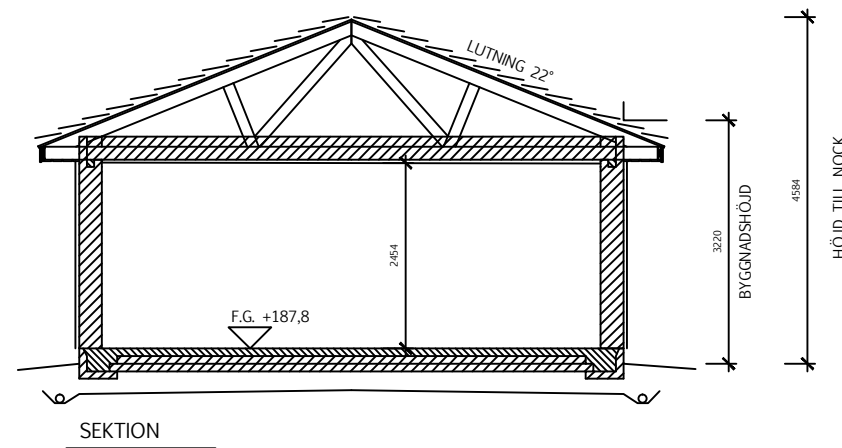
FASAD MOT SÖDER



FASAD MOT VÄSTER



PLAN



SEKTION

BYGGNADSARE  
GARAGE: 53,3 kvm

Dnr: MKBN 2016-00237  
KV. GRUDDBO 134:7  
MORA KOMMUN  
Grudbovägen

NYBYGGNAD - VILLA  
PLAN, SEKTION, FASADER  
SKALA 1:100 (A3)  
~~11 mars 2016~~

REVID.: TRÄFASAD 26 juni 2016  
Tadeusz Klimczak, Arkitekt SAR/MSA  
tadeusz@klimczak.se

