

KUNGSBERGET Ski Apartments 2

3 rok, 46 kvm, Bottenvåning

Lgh nr/Lgh lantmäterinr: 29/1001, Hus 8

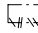
GENERELLA

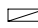
FÖRKLARINGAR

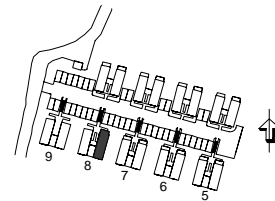
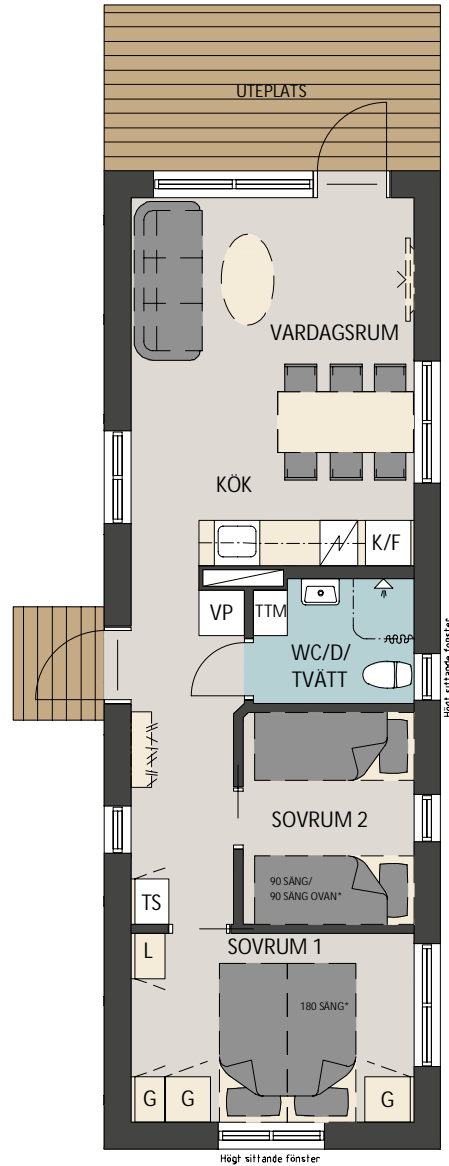
Avvikelser kan förekommer

G	Garderob
L	Linneskåp
K/F	Kyl/Frys
TTM	Topmatad tvätt
VP	Värmepump
TS	Torkskåp

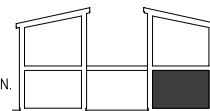
 Spis

 Hatthylla

 Schakt



VÅN. 1 TR
BOTTENVÅN.



SKALA 1:100