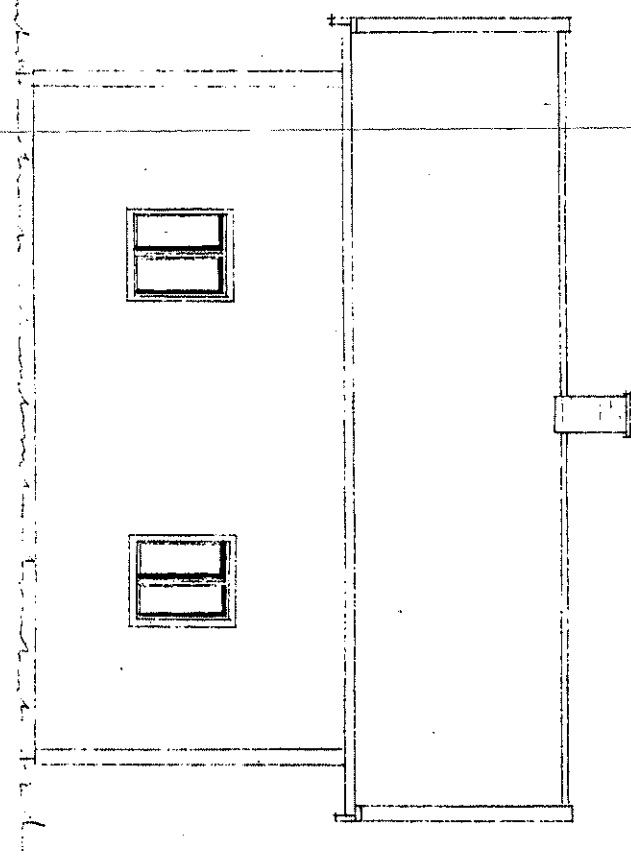
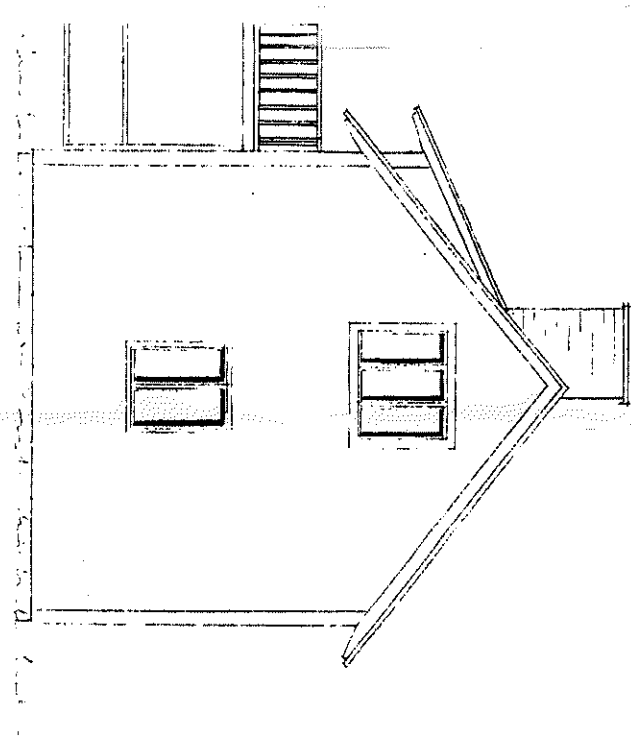


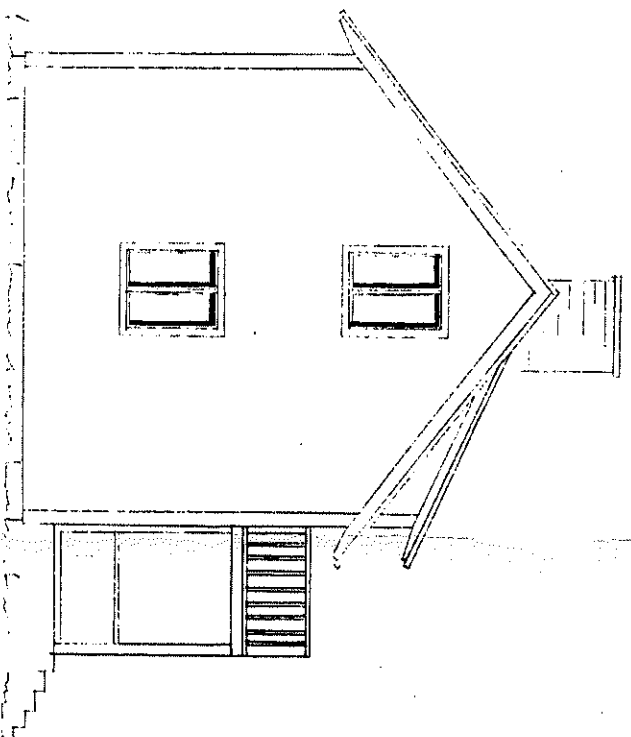
FACIA MOT VÄSTER



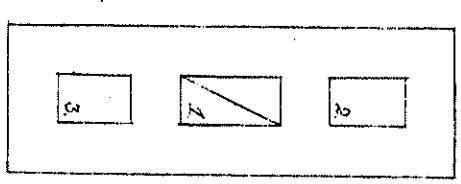
FACIA MOT ÖSTER



FACIA MOT SÖDER



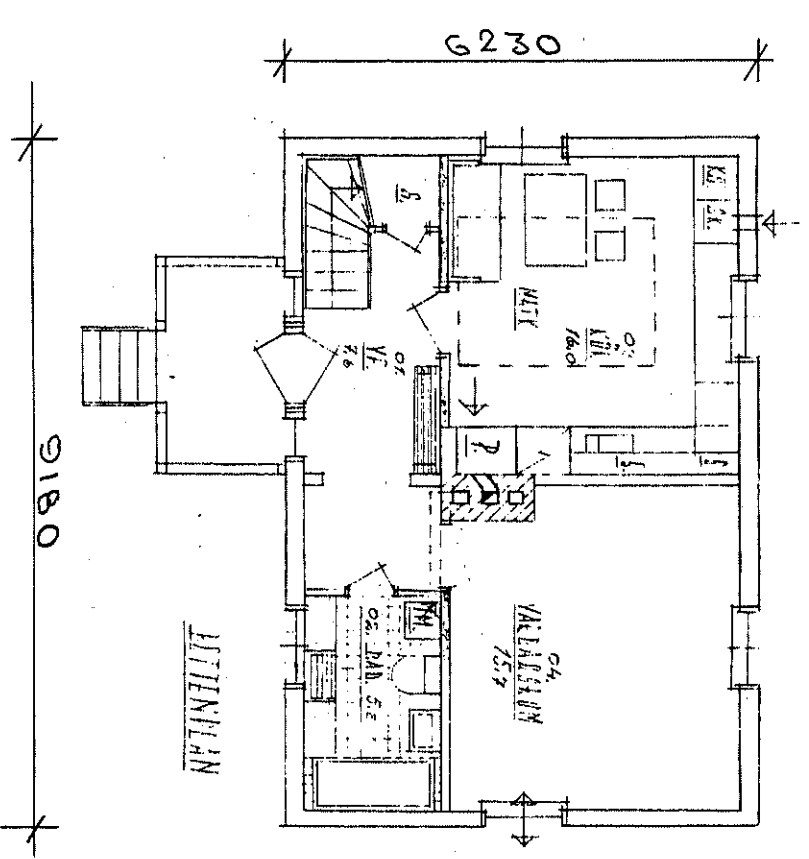
FACIA MOT NÖR



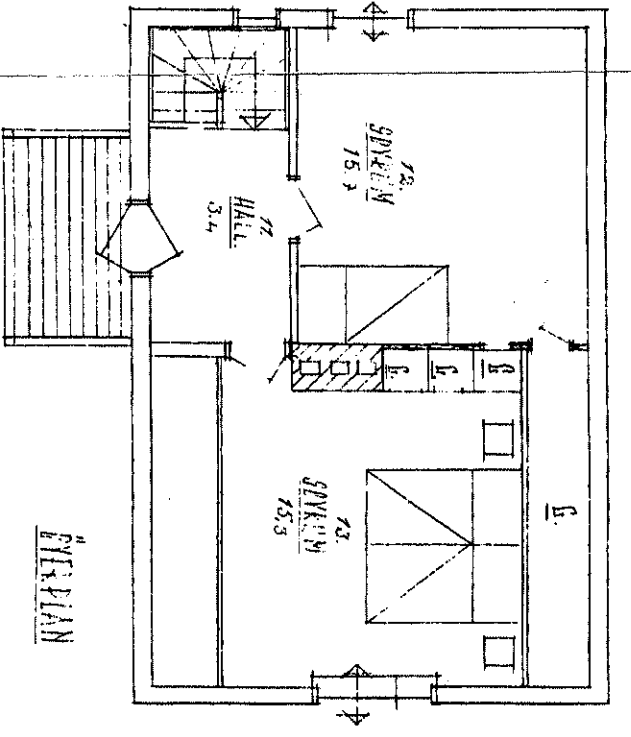
- |   |       |     |       |
|---|-------|-----|-------|
| 1 | BEKKE | FÄM | PARHA |
| 2 | IMRÅ  | "   | KRK   |
| 3 | TYAK  | "   | LAD   |

ANMÄRKNINGAR

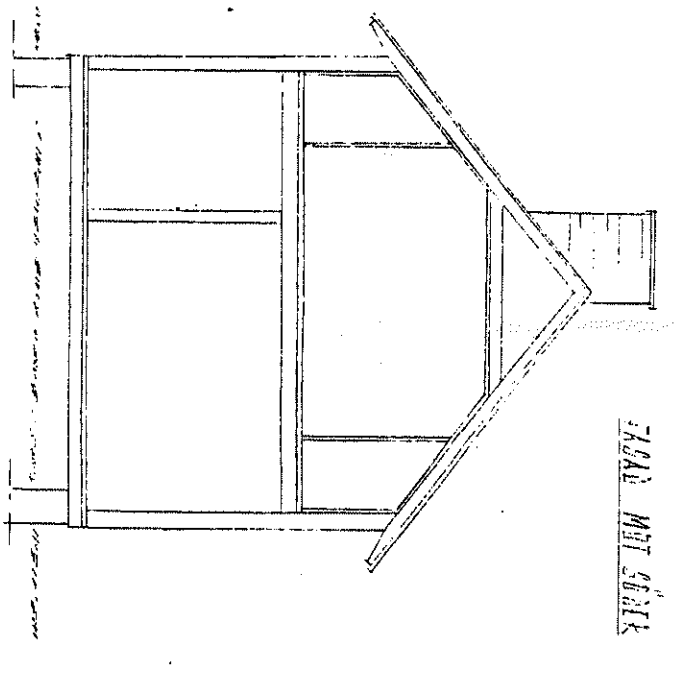
SKALA 1:200



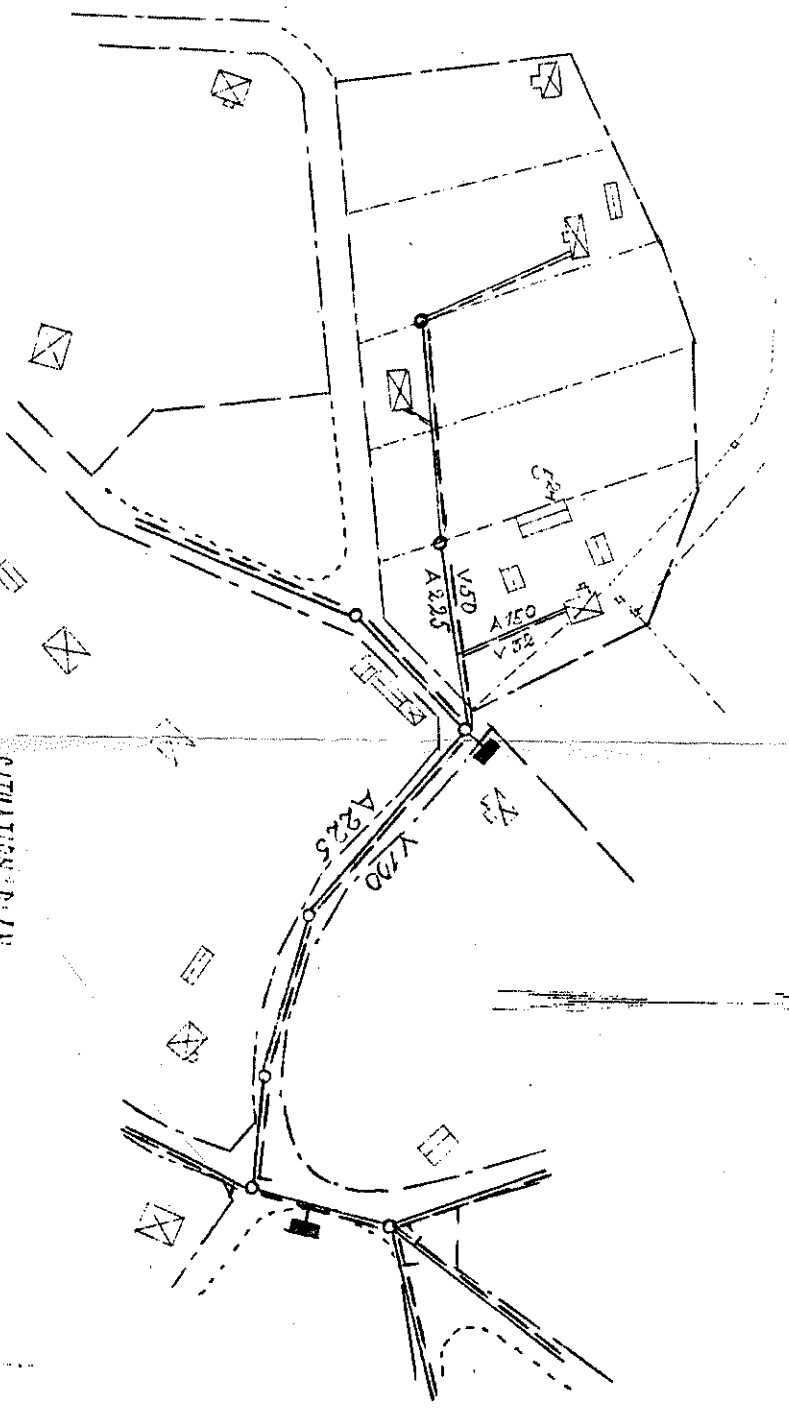
LITENPLAN



ÖVERPLAN



SEKTION



SITUATIONSPÄN  
SKALA 1:2000

**UPPMÄTNINGSRITNING**

REVISED DEN 2.6.1952 O/W.

REVIDERAD DEN 7.12.1959.

IDRE BYGGMÄSTERSKONTOR, IDRE

IPRE 5784

K. E. VIKTOR JOHANNSSON

DRIVLÄSARE

Skala 1:1000/20/2000	Blått av. Sk. 1/2000
Ritad den 12. 22. 1953.	Ritning nr 163-A