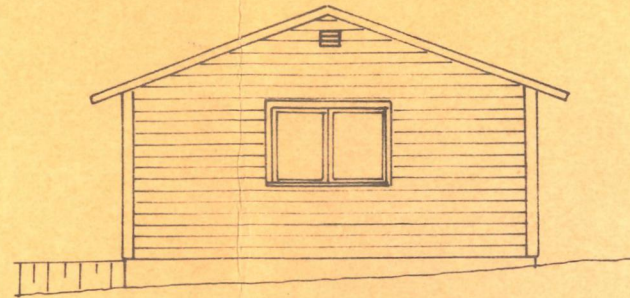
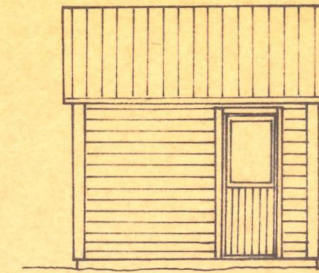


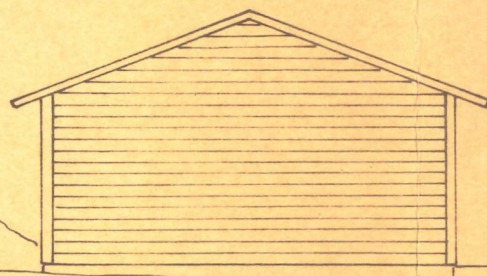
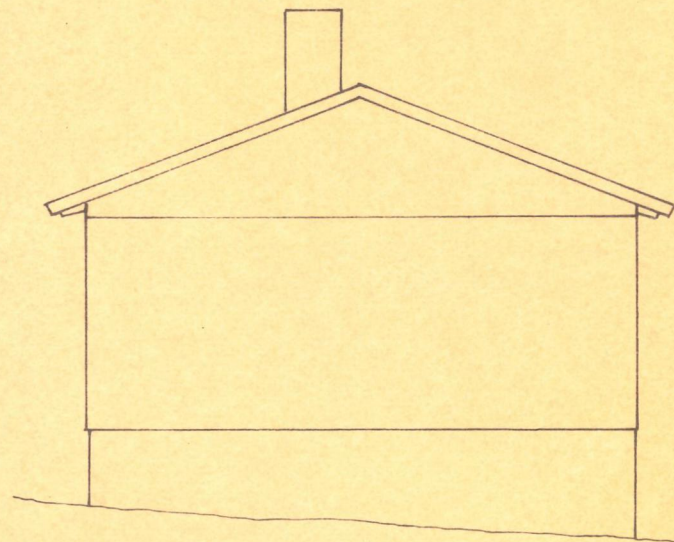
FASAD MOT SÖDER



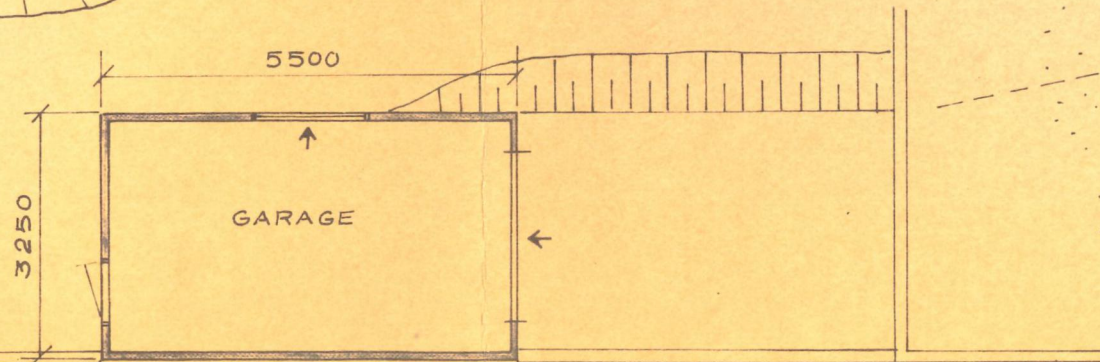
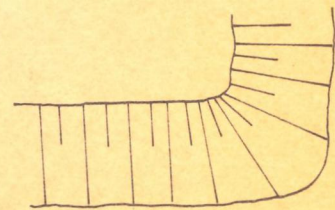
FASAD MOT ÖSTER



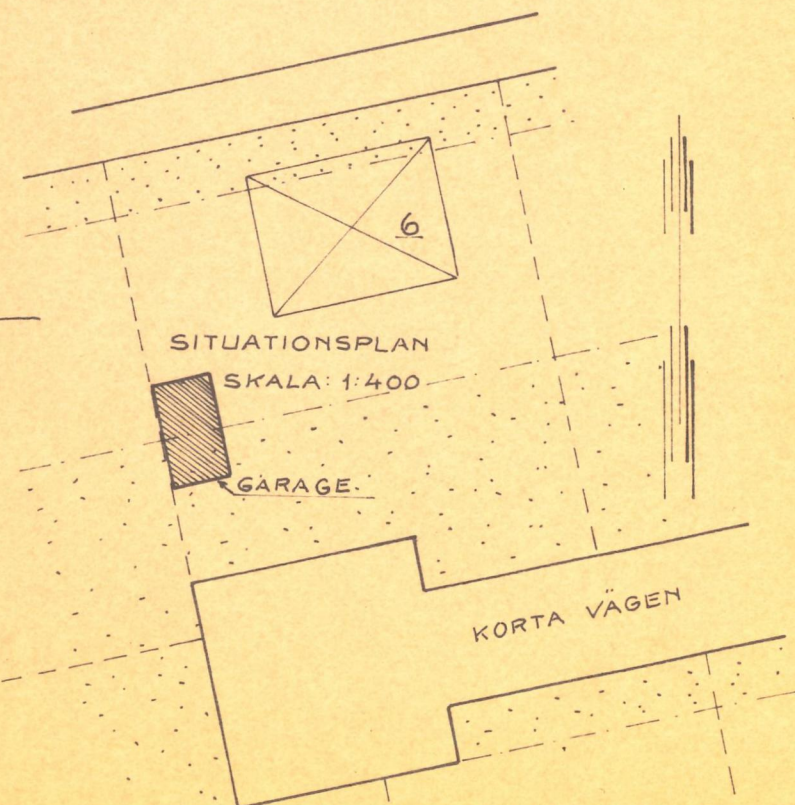
FASAD MOT NORR



FASAD MOT VÄSTER



PLANSEKTION



Tillhör Strömstads byggnadsnämnds

protokoll 575 1965 S 100

Byggnadsnämndens sekr.

KV. ÄLGEN, TOMT NR:6  
FÖRSLAG TILL NYBYGGNAD AV GARAGE  
FASADER, PLANSEKTION, SITUATIONSPLAN  
SKALA 1:100 1:400  
STRÖMSTAD DEN 26/4 1965

Lenn Andersson