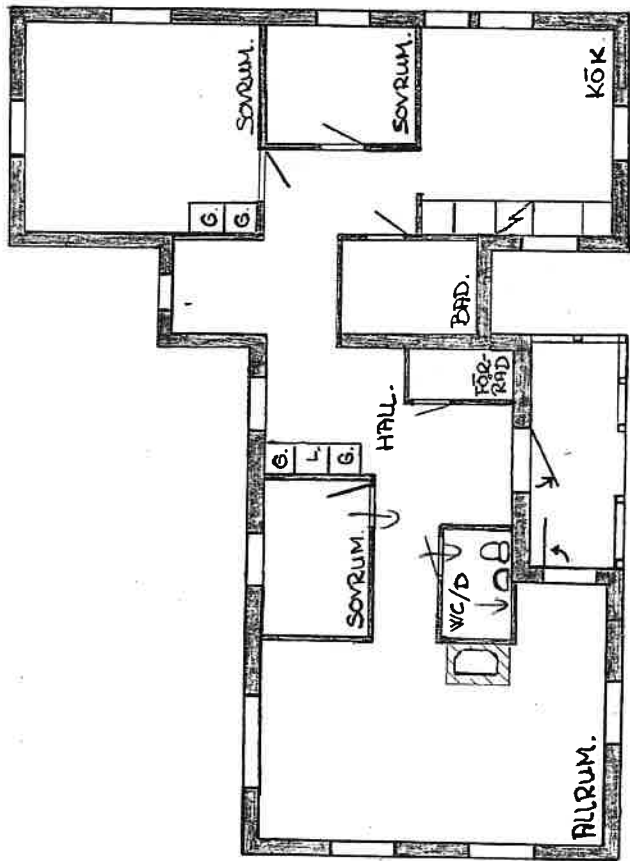




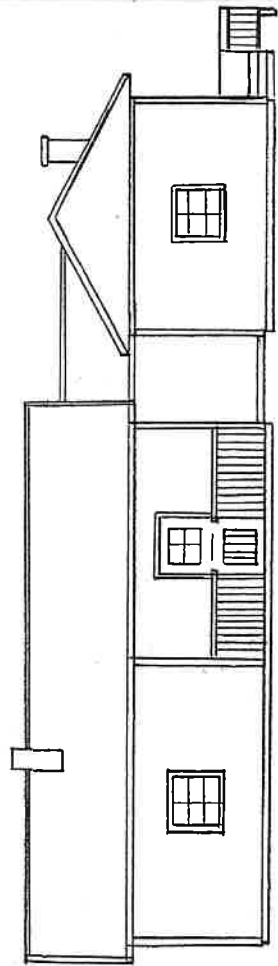
UDDEN

BRANT.

2

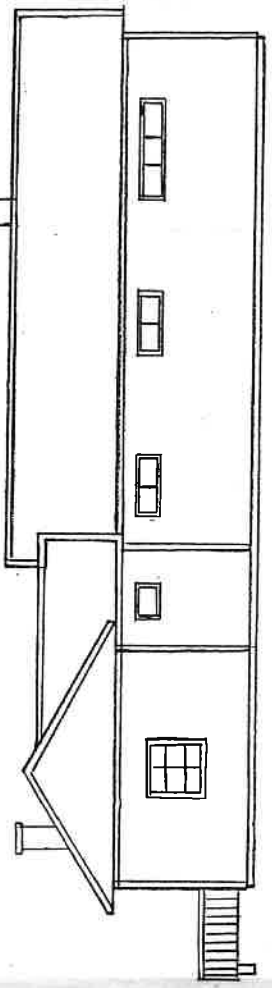


PLAN.

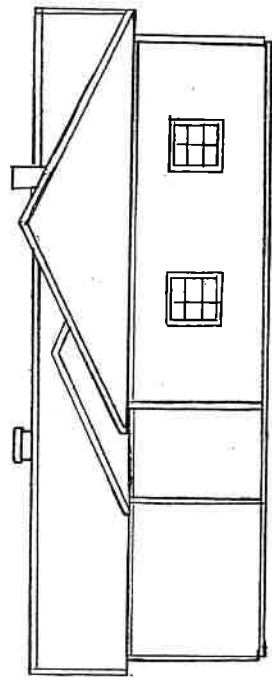


ERSAD MOT NORR.

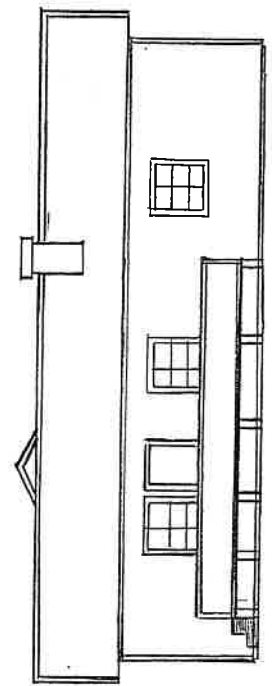
"Högskolan i
 Göteborg"
 89-03-02
 10
 Denna karta
 är utarbetad
 av
 Högskolan



ERSAD MOT SÖDER.



ERSAD MOT ÖSTER.



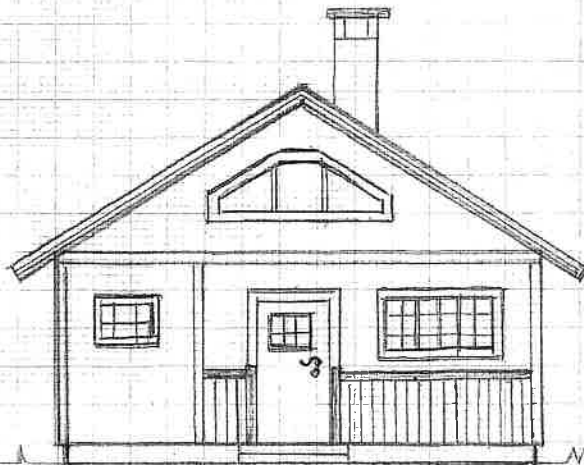
ERSAD MOT VÄSTER.



KYRKBYN 196:2 ORSA
 Tillbyggnad:
 PLAN, GAVEL O. FRSAD. RIT.NR. 2.
 SKALA 1:100. 28/2-89.
 G. J. J.

-08-25

05/226

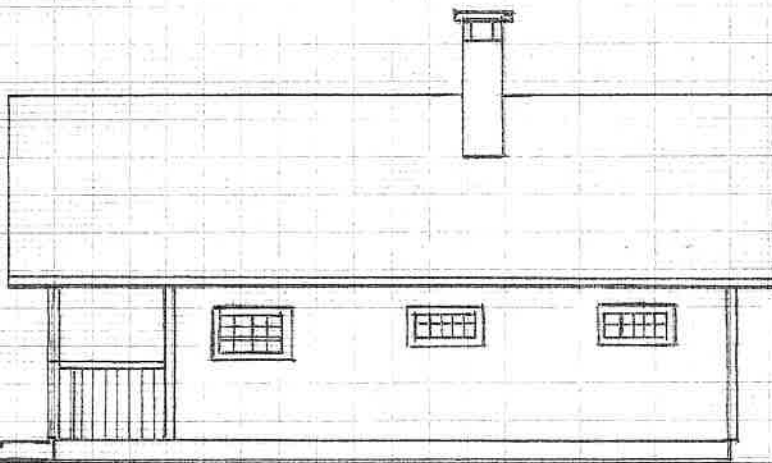


2005-10-17

§121

Delegationens beslut
fattat av
stadsarkitekt

FASAD MOT VÄSTER.



FASAD MOT SÖDER.

BRANTUDDEN 2. ORSA.

FASADER.

RITN. NR 3.

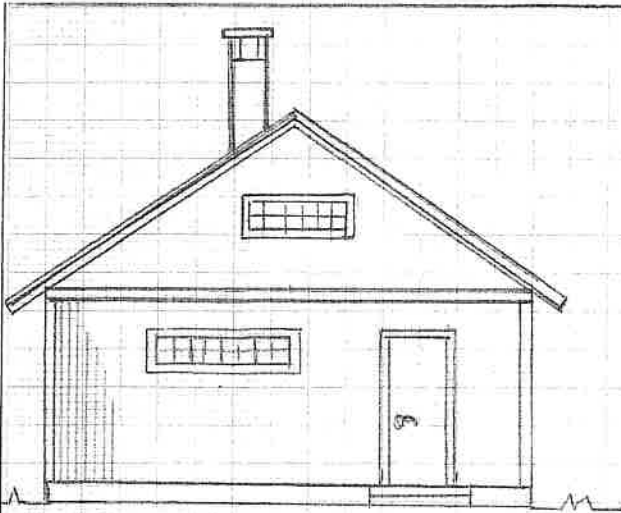
SKALA. 1:100.

25/8-05.

Torbjörn Hansén

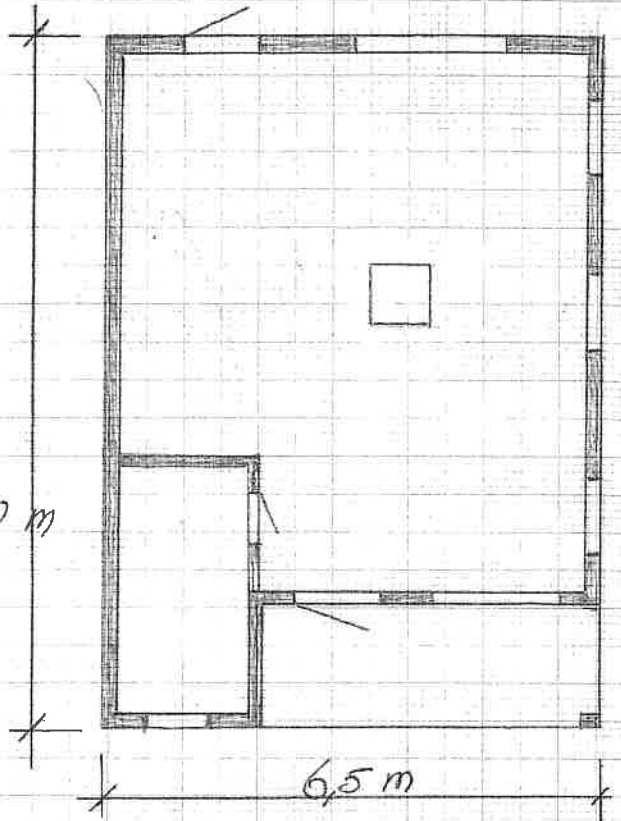
-08-25

05/226



FASAD MOT ÖSTER.

9,0 m



6,5 m

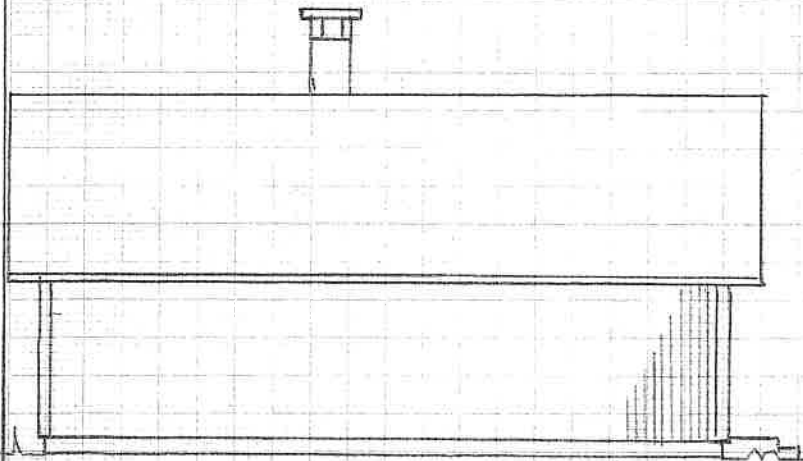
PLAN.

Tillhör Byggnadsnämndens arkiv

2005-10-17

§ 121

Diaregistrationsnummer
fastställt av
stadens arkiv



FASAD MOT NORR.

BRANTUDDEN 2. ORSA

PLAN O. FASADER, RITN. NR 2.

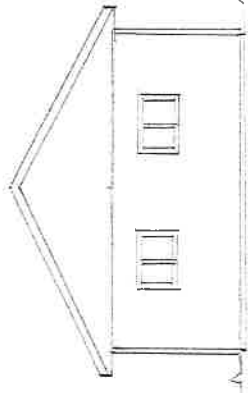
SKALA. 1:100.

25/8-05.

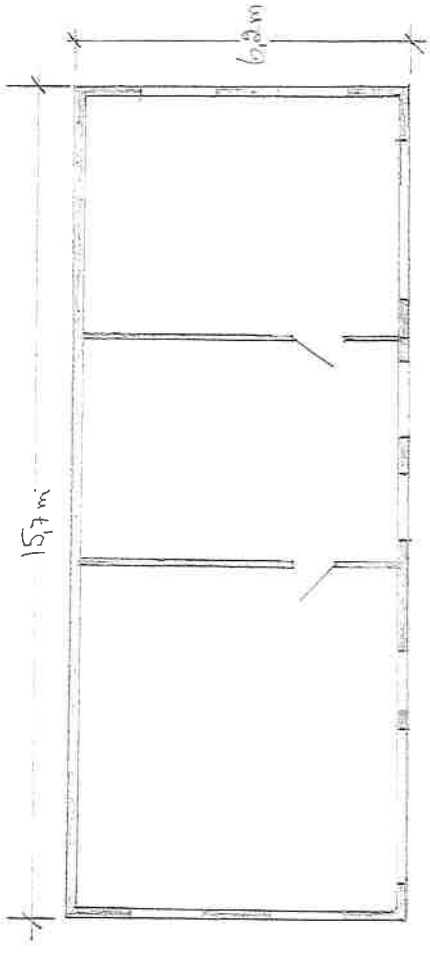
Touboer Hansén

Stadsbyggnadsförvaltningen
Mora Orsa
2012-06-12

Dnr.....



FASAD MOT SÖDER



PLANRITNING

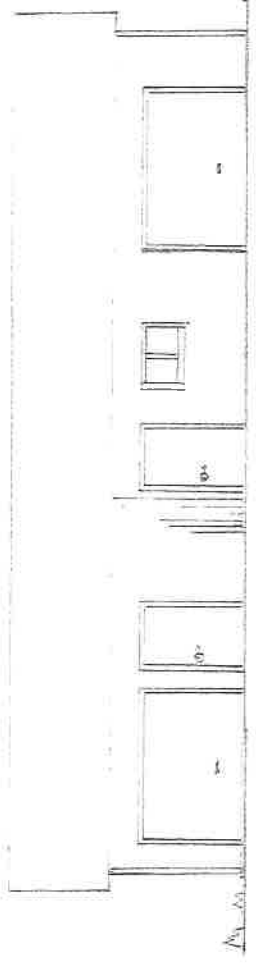
BRANTUDDEN 2 ORSA

FASADRITNINGAR
PLANRITNING
SKALA 1:100

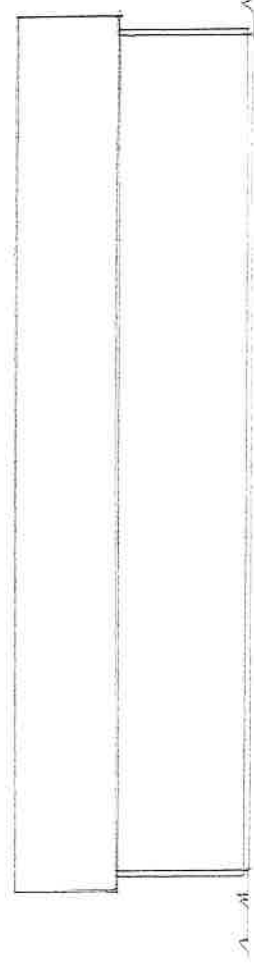
RITNING. 8.

11/6-12

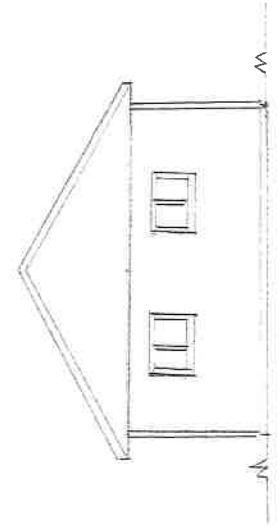
Stadsbyggnadsförvaltningen



FASAD MOT VÄSTER.



FASAD MOT ÖSTER.



FASAD MOT NÖR.