



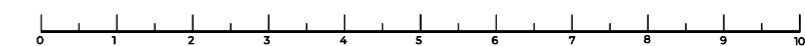
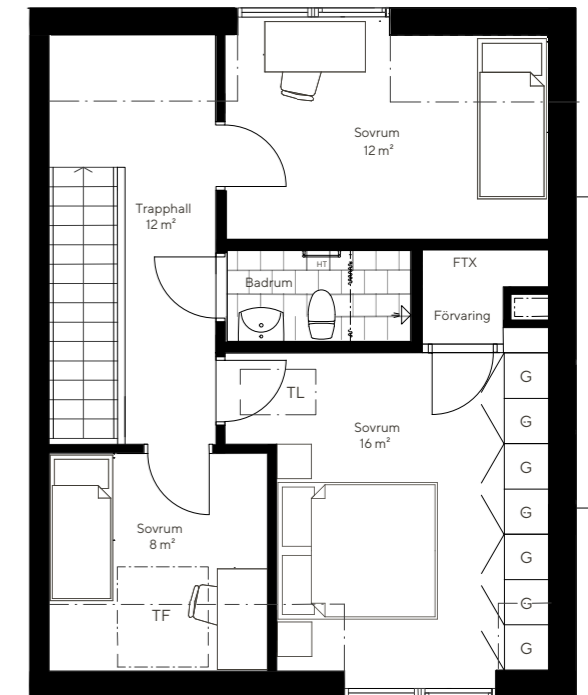
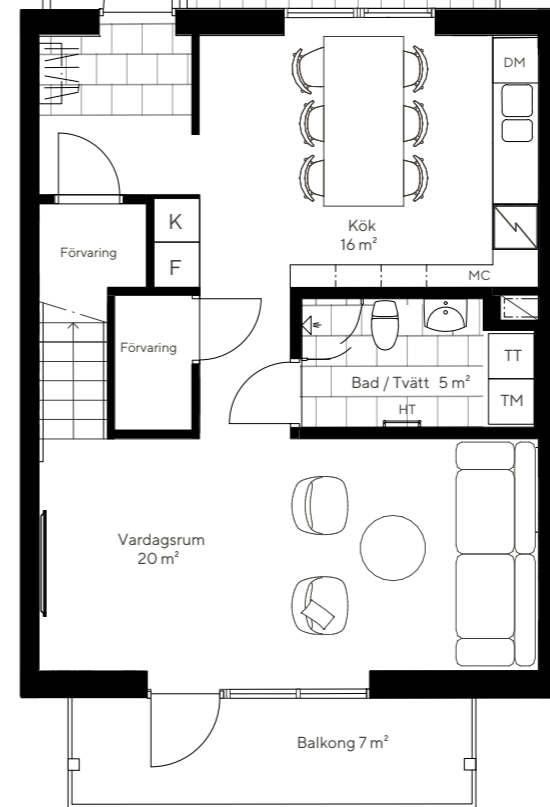
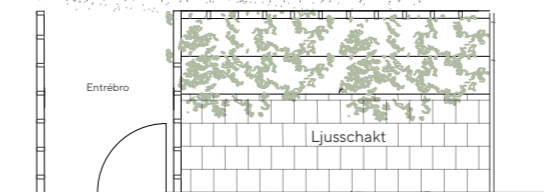
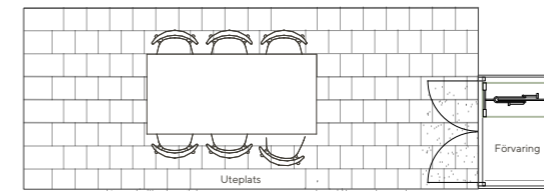
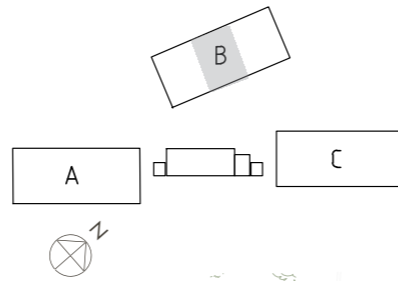
# Lägenhet 118E

4 Rum och kök

Plan 2 och 3

109 kvm

- |     |                                    |    |              |    |             |    |              |
|-----|------------------------------------|----|--------------|----|-------------|----|--------------|
| K   | Kyl                                | DM | Diskmaskin   | TM | Tvättmaskin | TT | Torktumlare  |
| F   | Frys                               | H  | Häll och ugn | G  | Garderob    | HT | Handdukstork |
| MC  | Micro                              | TF | Takfönster   | TL | Taklucka    | ST | Städkåp      |
| FTX | Värmeväxlande ventilationsaggregat |    |              |    |             |    |              |



Ytångivelser är preliminära, avvikelser kan förekomma.