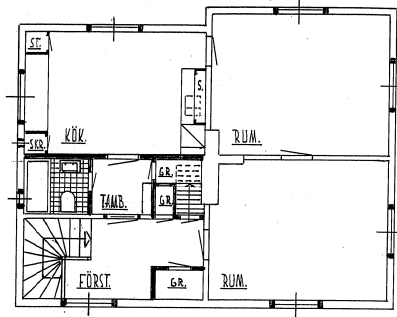


HANSSONS OLOF OLSSON MORA-NORET.  
FÖRBÄTTRING AV FASTIGHETEN MORA-NORET 52<sup>3</sup>

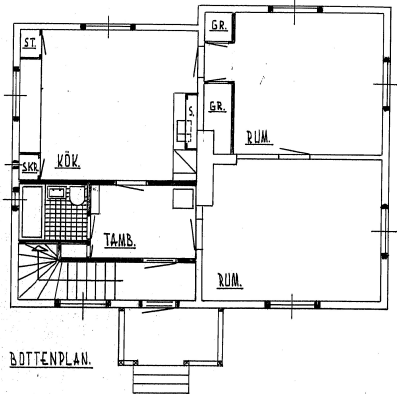


ÖVRE PLAN.

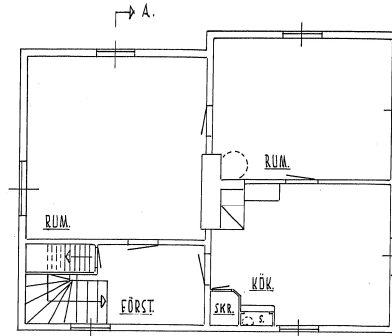
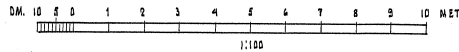
BETECKNING:

NYTT

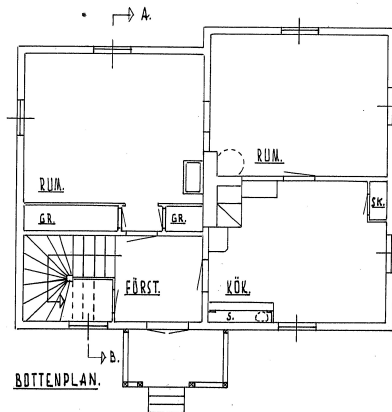
GAMMALT:



BOTTENPLAN.

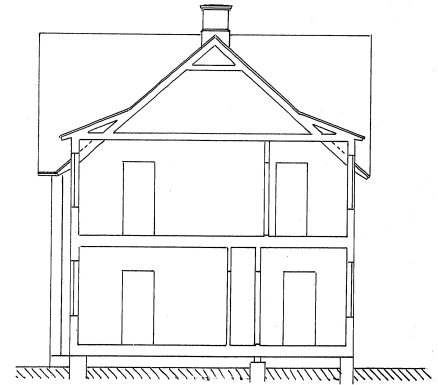


ÖVRE PLAN



BOTTENPLAN.

UPPMÄTNINGSRITNING.



SEKTION A-B.

019060

MORA I JAN. 1932  
STÅNAR CEDERLUND