


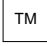
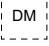
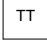

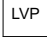
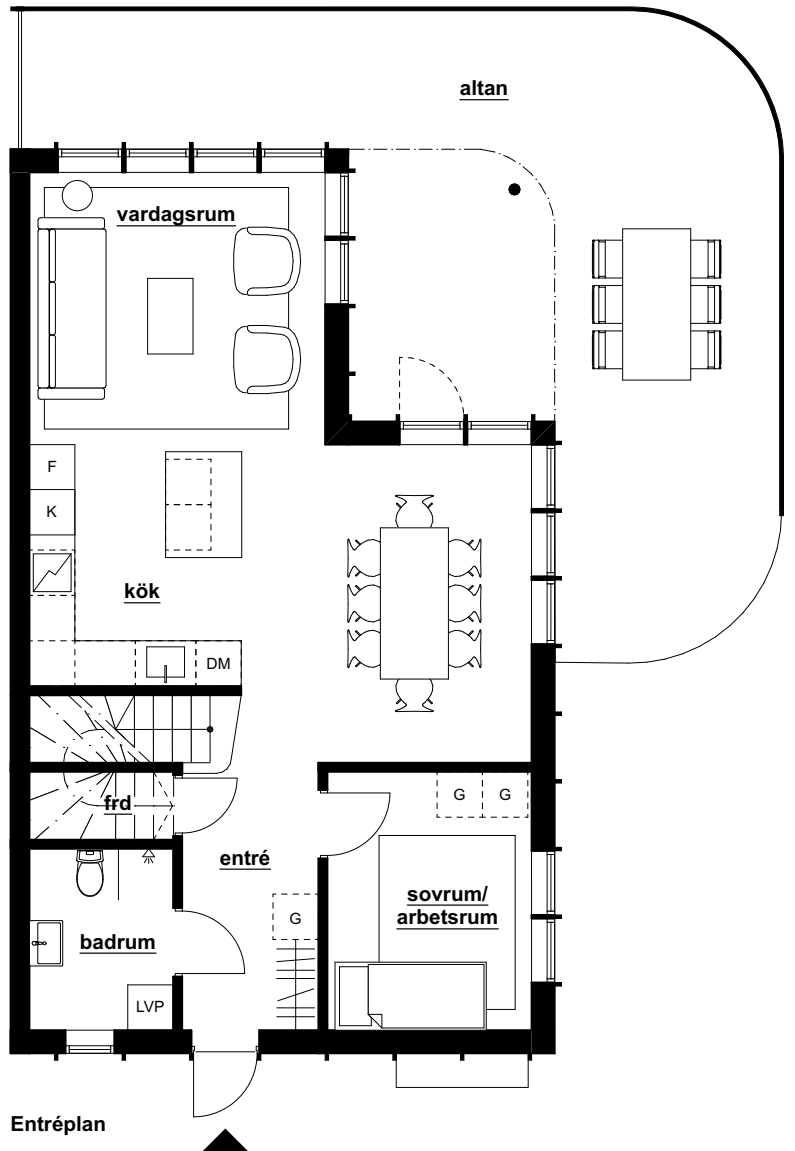


Hus nr 10

Antal rum 7
Storlek (BOA) 131 m²
Tomtstorlek 845 m²




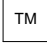

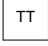


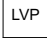
- | | | | |
|--|----------------|---|--------------------|
|  K | Kyl |  G | Plats för garderob |
|  F | Frys |  TM | Tvättmaskin |
|  DM | Diskmaskin |  TT | Torktumlare |
|  Inbyggnadshäll | Inbyggnadshäll |  LVP | Värmepump |

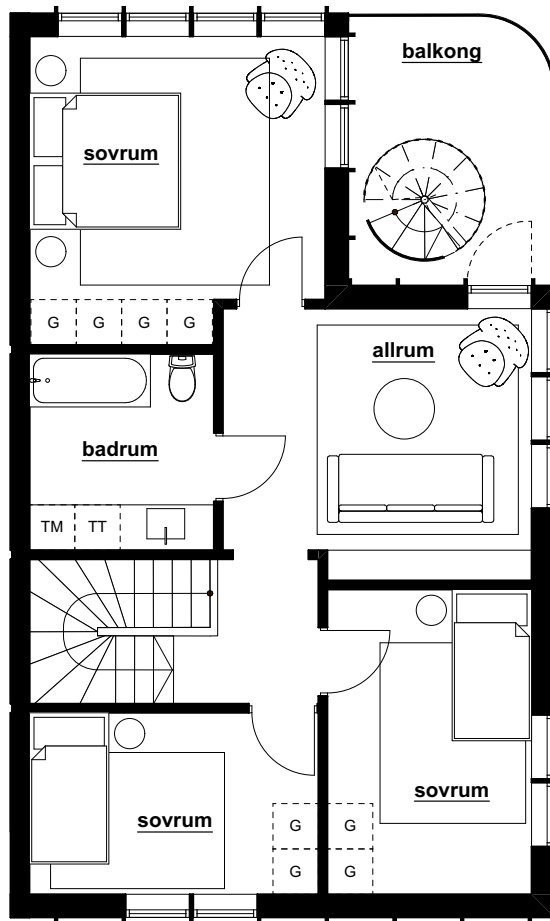
Räcke vid altanen förekommer på hus 4-6 och 8-12



Hus nr 10

Antal rum 7
Storlek (BOA) 131 m²
Tomtstorlek 845 m²

 K	Kyl	 G	Plats för garderob
 F	Frys	 TM	Tvättmaskin
 DM	Diskmaskin	 TT	Torktumlare
 	Inbyggnadshäll	 LVP	Värmepump




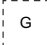



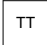

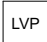
Räcke vid altanen förekommer på hus 4-6 och 8-12

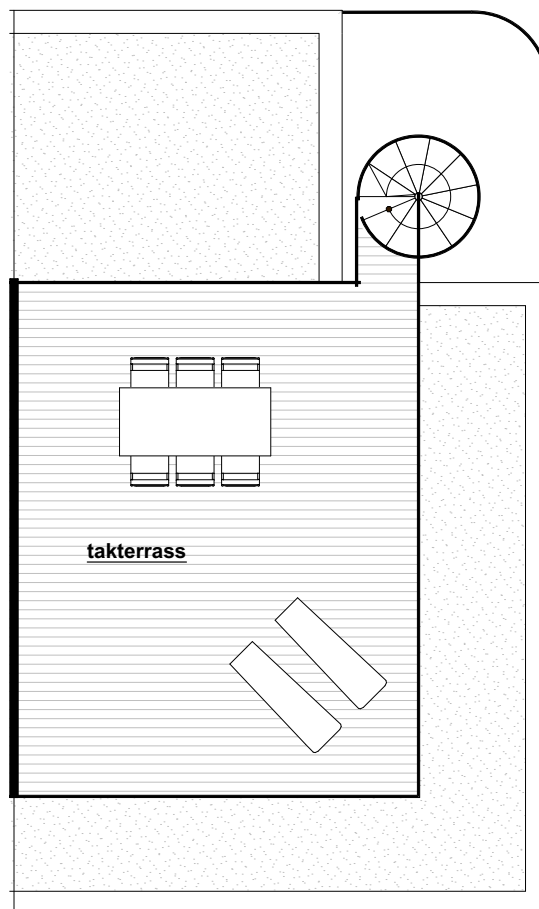
Övervåning



Hus nr 10

Antal rum 7
Storlek (BOA) 131 m²
Tomtstorlek 845 m²

 K	Kyl	 G	Plats för garderob
 F	Frys	 TM	Tvättmaskin
 DM	Diskmaskin	 TT	Torktumlare
	Inbyggnadshäll	 LVP	Värmepump



Räcke vid altanen förekommer på hus 4-6 och 8-12

Takplan

