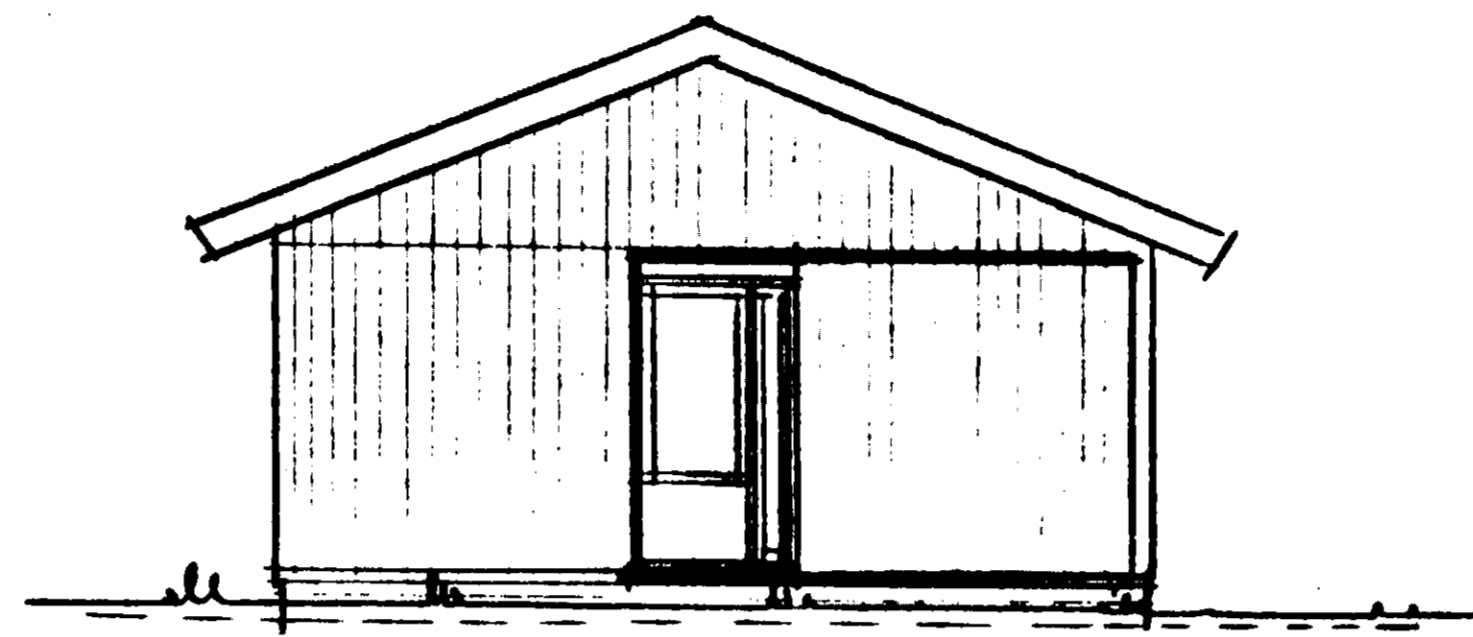
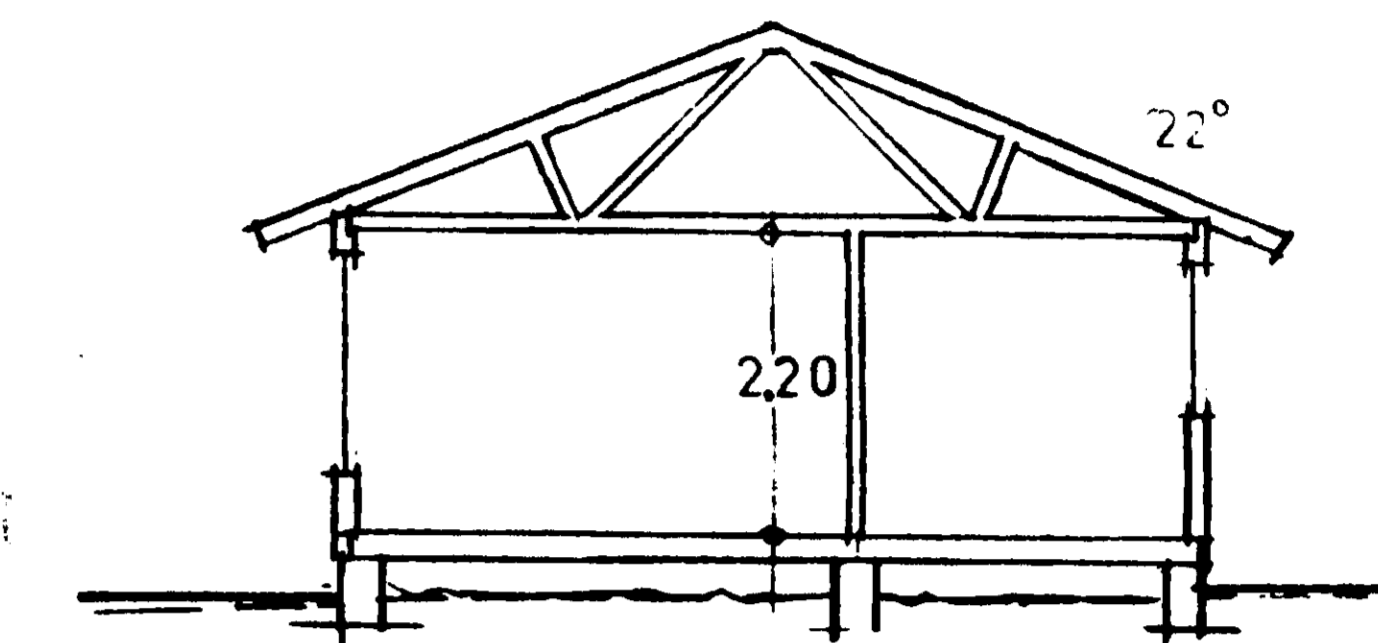


FASAD MOT VÄSTER



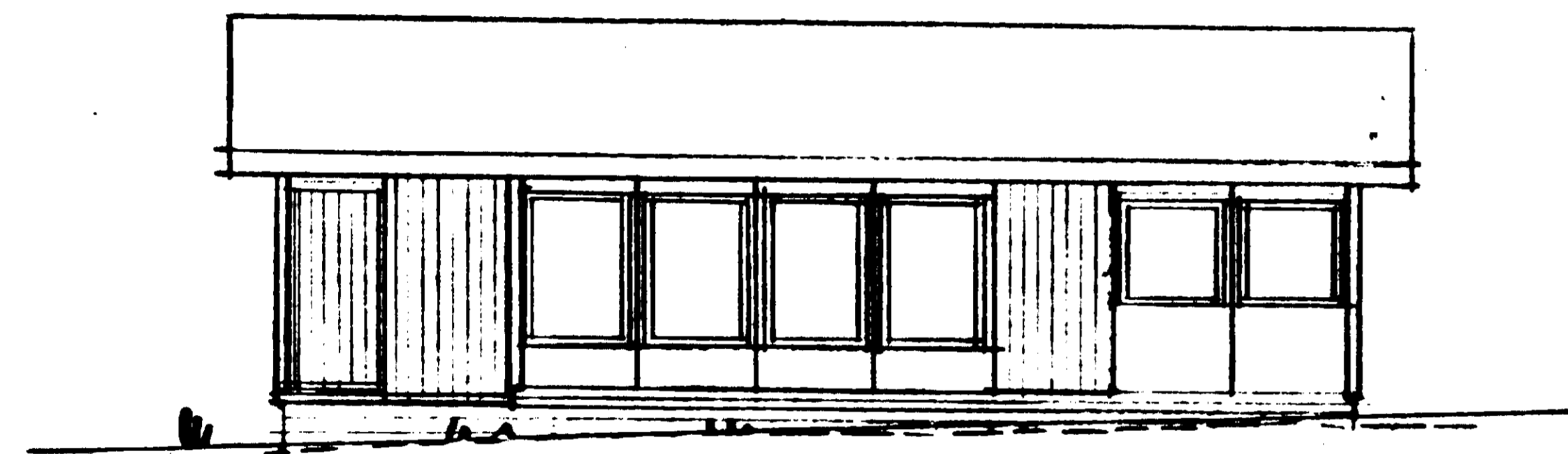
FASAD MOT SÖDER



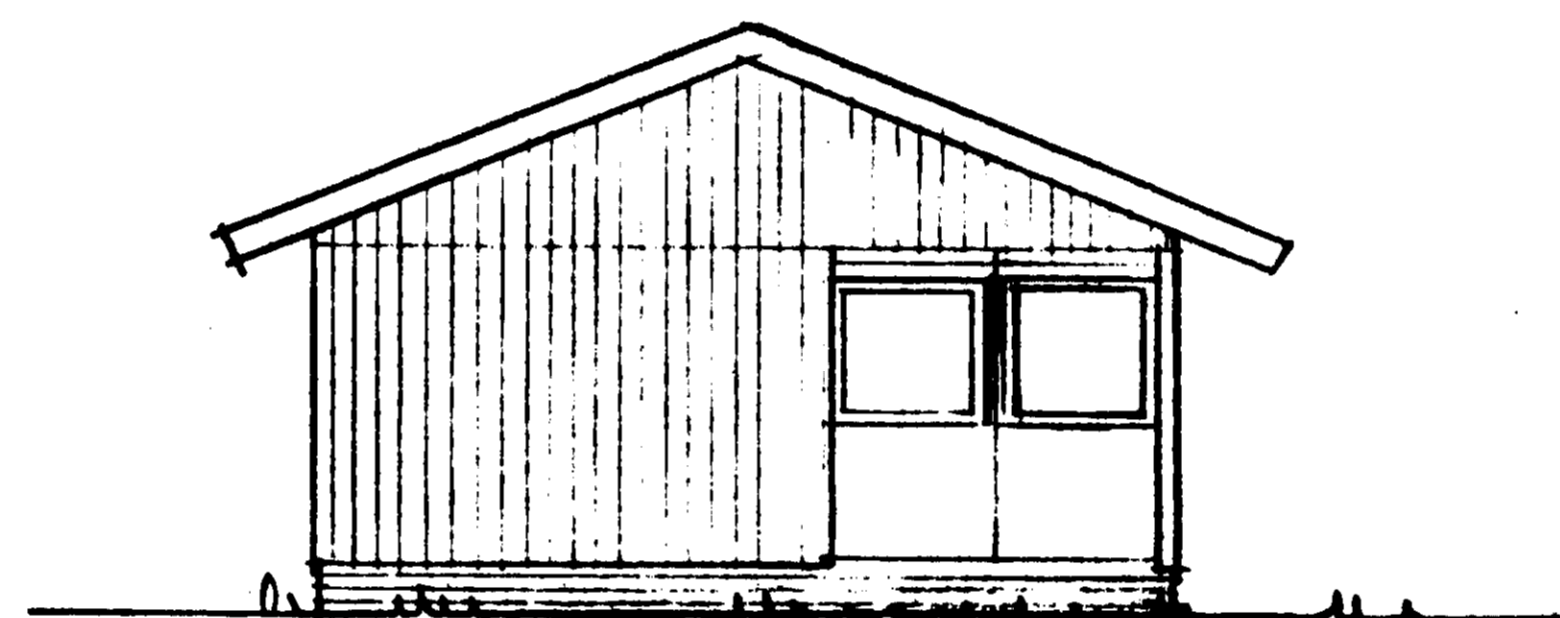
SEKTION

188840

NO. 188840
Lysnings
9 MAI 1974 (19)
94/347 076334



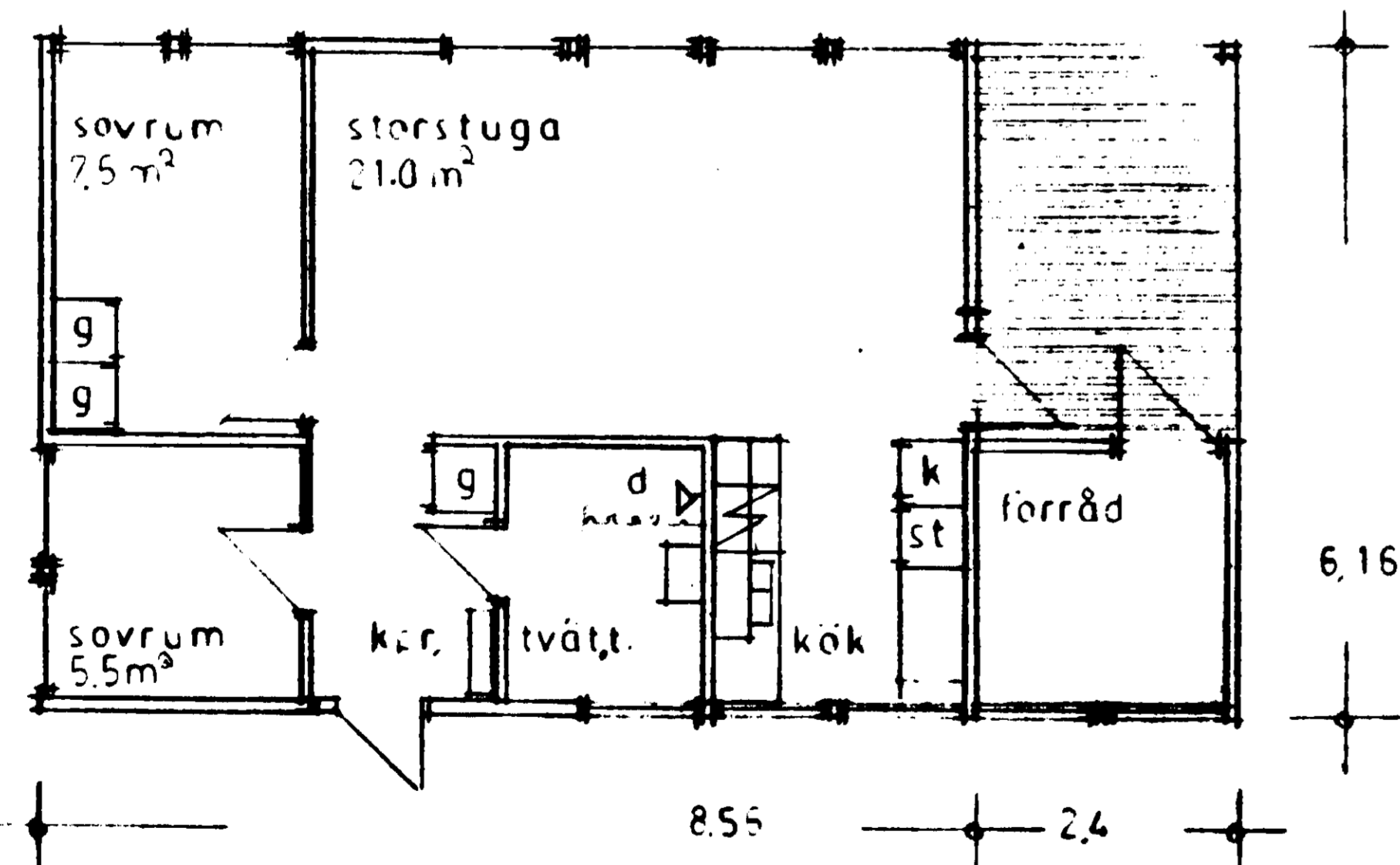
FASAD MOT ÖSTER



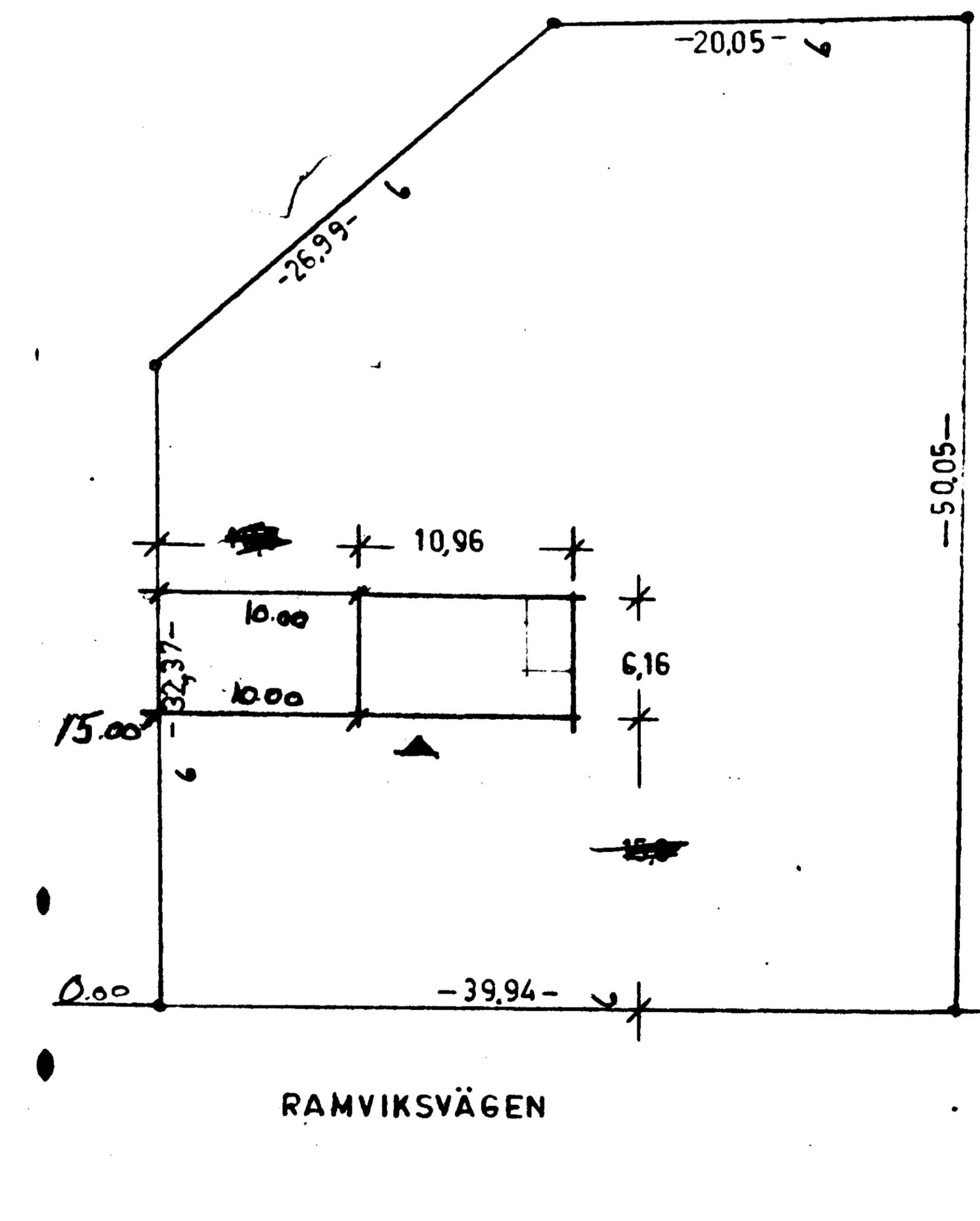
FASAD MOT NORR

--- NUV. MARKL.

--- BLIV. MARKL.

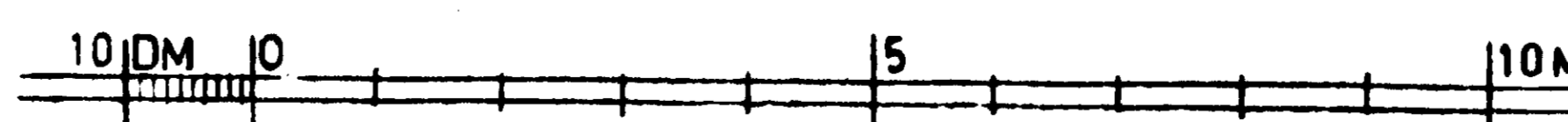


FLAN 54,3 M²



SIT. PLAN SKALA 1:400

UTSTAKAT
ENT S-PLAN
20/5-74
M.U.O.B.R



REV	ANT	AVSER	DATUM	SIGN	BACKSIPPAN F54-E SP
					FRU MONICA GUSTAVSSON JOHANNESHOV
NSB:s INDUSTRIER AB BORONUS BORO 570 12 LANDSBRO 1 Telefon 0383-604 10					RÖRVIK 1:107 INOM NORRTÄLJE KOMMUN
RITKONTORET LANDSBRO 1974. 04.24					SKALA 1:100
RITAD	GRANSKAD	ARBETSNUMMER	RITNINGNUMMER	REV	



FÖRMINSKNINGSGRAD